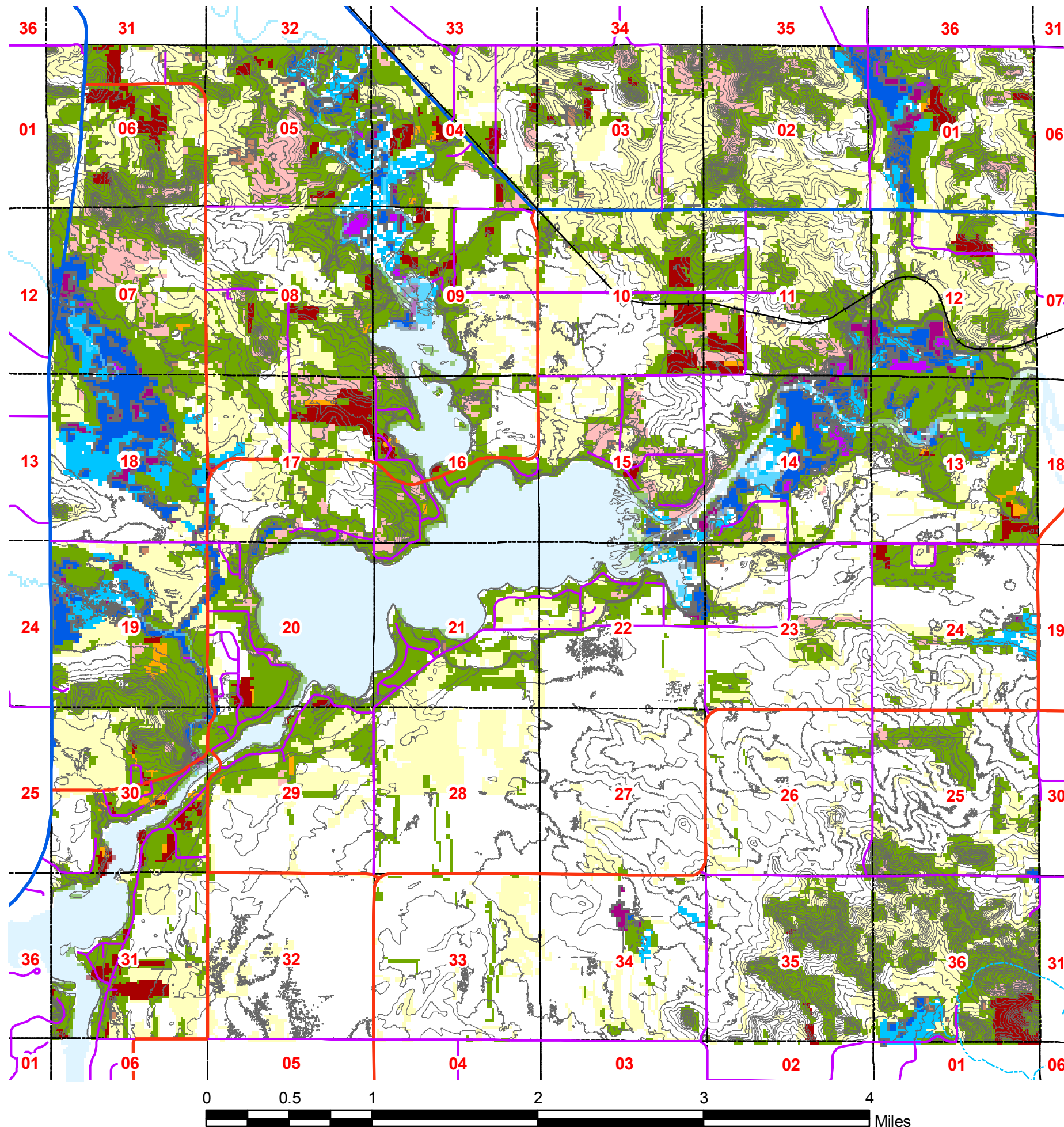
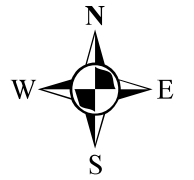


MAP E-1

Land Cover and Topography

(revised 4/2009)

Town of Tainter
Dunn County, Wisconsin



Forested

- FOREST: red pine
- FOREST: oak
- FOREST: mixed/other broad-leaved deciduous
- FOREST: mixed deciduous/coniferous

Wetland

- WETLAND emergent/wet meadow
- WETLAND lowland shrub: broad-leaved deciduous
- FORESTED WETLAND: broad-leaved deciduous
- FORESTED WETLAND: coniferous
- FORESTED WETLAND: mixed deciduous/conifer

Other

- AGRICULTURE
- GRASSLAND
- SHRUBLAND

This map utilizes satellite imagery from 2001. The data was compiled from the Wisconsin DNR datasets. This drawing is neither a legally recorded map nor a survey and is not intended to be used as one.

(Source: Foth & Van Dyke Year 2020 Land Use Plan, Map 6-1
2008 Aerial Photography (NAIP) Interpretation.
2009 Dunn County Parcel Layer.
2007 Dunn County LiDAR data.
2001 WDNR Landuse data.