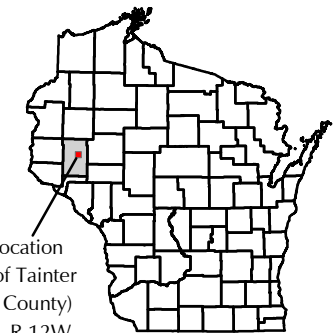


TOWN OF OTTER CREEK, DUNN COUNTY
T 30 N, R 12 W

MAP H-4 PROTECTION CRITERIA ENVIRONMENTALLY SENSITIVE AREAS

Town of Tainter

Dunn County,
Wisconsin



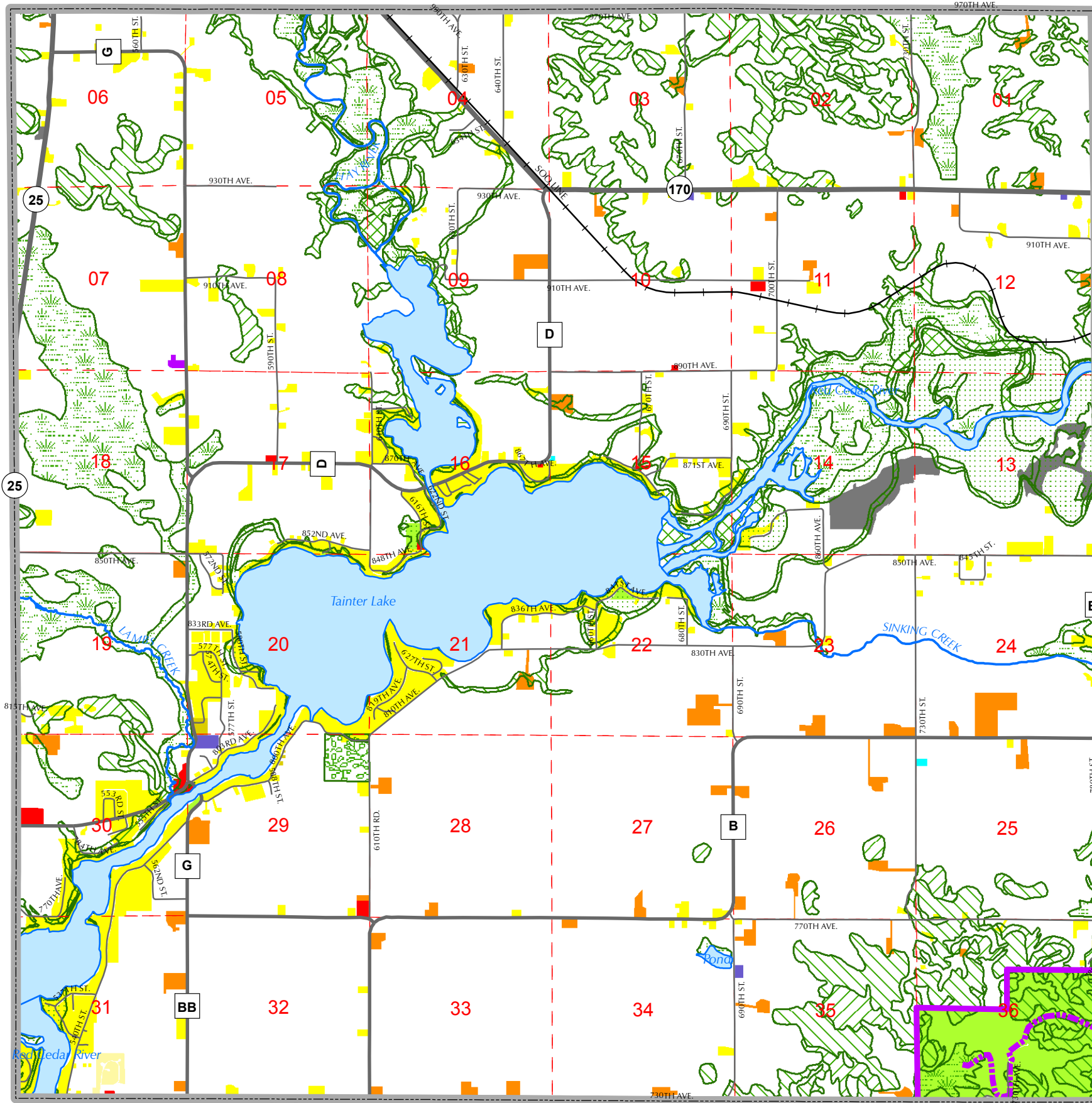
Site Location
Town of Tainter
(Dunn County)
T.29N, R.12W

State of Wisconsin

TOWN OF SHERMAN, DUNN COUNTY
T 29 N, R 13 W

TOWN OF COLFAX, DUNN COUNTY
T 29 N, R 11 W

TOWN OF RED CEDAR, DUNN COUNTY
T 28 N, R 12 W



Legend

- Streams
- Surface Water
- Railroad
- State Highway
- County Roads
- Town Roads
- Hoffman Hills State Trail
- Hoffman Hills State Area
- DNR wetlands
- Slopes 12%-20%
- Slopes GT 20%
- Floodplain
- Lowland
- Oak Savannah
- Islands
- Section Lines
- Town Boundary
- Intensive Existing Land Use**
- Single Family Residential
- Multi-Family
- Mobile Home
- Farmstead
- Commercial
- Government/Public/Institutional
- Cemetery
- Industrial
- Park and Recreation
- Game Farm
- Utilities

Source: Data supplied by Dunn County and West Central Wisconsin Regional Planning Commission.

*Includes surface water and related shorelines.

0 1,750 3,500 Feet

